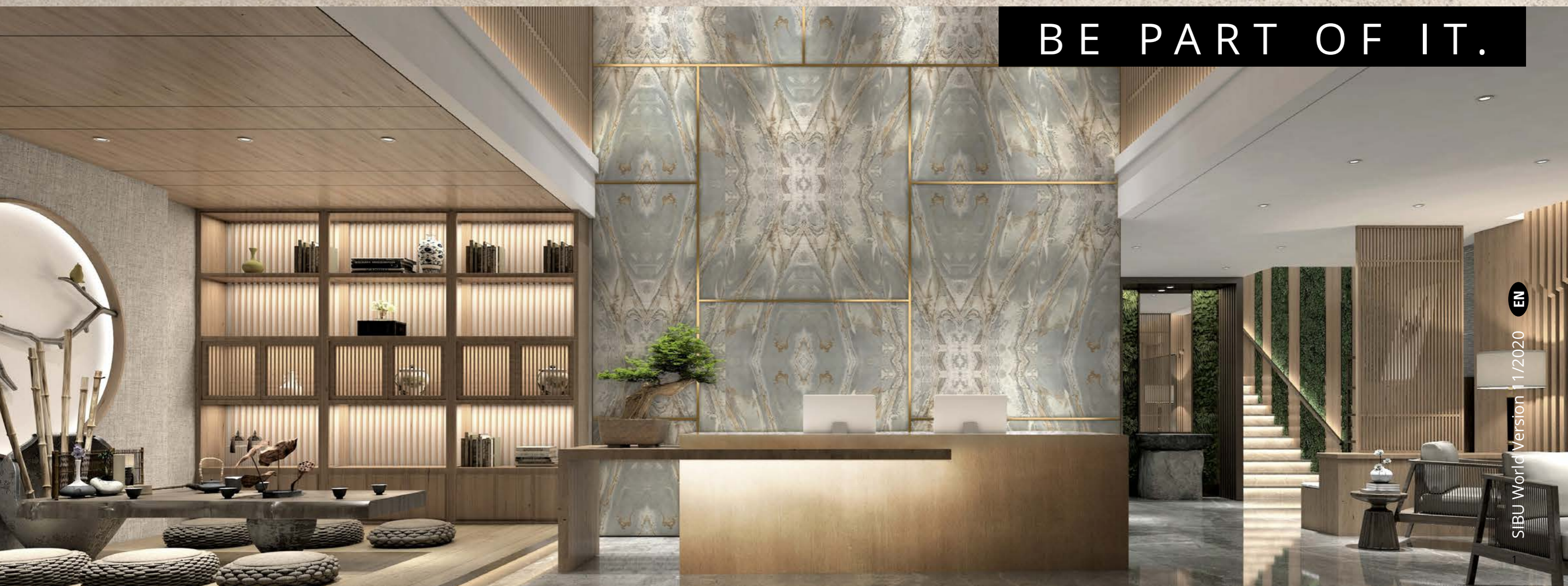


# SIBUWORLD

BE PART OF IT.







# MADE IN AUSTRIA

First class quality from A to Z. SIBU DESIGN quality commences with strict raw material controls and extends to the very latest production process and reliable delivery logistics. Sustainability constitutes our number one priority along the entire value added chain and our production takes place solely in Austria, thereby guaranteeing surfaces that are entirely PVC-free.

**SIBU | DESIGN**  
we decorate.





## ABOUT SIBU DESIGN

1984 Foundation of the SIRO-BURG DESIGN company | 2001 Company renamed as **SIBU DESIGN** | 55 employees | Area: 6,300m<sup>2</sup> (offices / production / warehouse) 2,300m<sup>2</sup> high bay warehouse (therefore short delivery times even for small orders) | SIBU DESIGN GmbH & Co KG is the leading producer of high-quality, design sheets for interiors. The sheets are developed specially for interior design, furniture manufacture, hospitality and shop concepts, as well as fashion, architectural and display purposes.

As a result of its over 35 years of branch experience, SIBU DESIGN has established itself as the market leader. The company's product portfolio includes a stock range of

over 300 designs. SIBU DESIGN stands out owing to its fashionable designs, top quality workmanship, short delivery times and its offer of great flexibility with regard to just-in-time projects.

SIBU DESIGN can count among its customers leading surfacing producers in the global market, furniture manufacturers and international textile brands, for which it provides individual designs for store layouts.

Sustainability is constantly SIBU DESIGN main priority. It produces exclusively in Austria and thereby guarantees entirely PVC-free surfaces.







# PRODUCTGROUPS

FABRIC-LINE (FL)

OPACO-LINE (OL)

LEATHER-LINE (LL)

DECO-LINE (DM)

MULTISTYLE (MS)

ACRYLIC-LINE (AC)

STRUCTURE-LINE (SL)

PUNCH-LINE/3D (PL/PL3D)

SIBUGLAS (SG)

TRANSLUCENT-LINE (TL)

WOOD-LINE (WL)

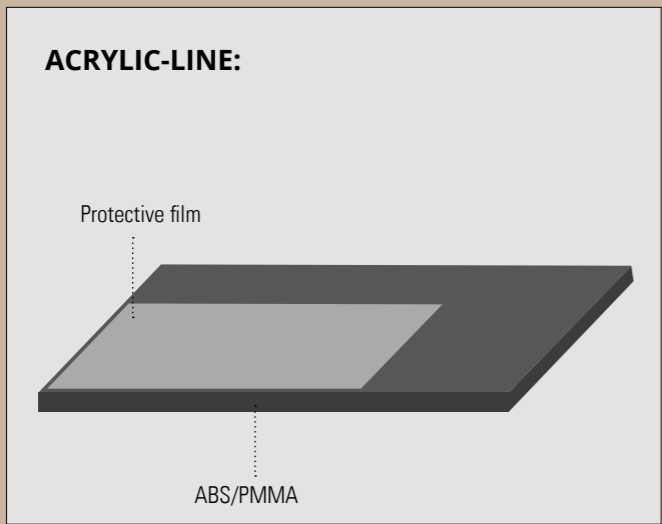
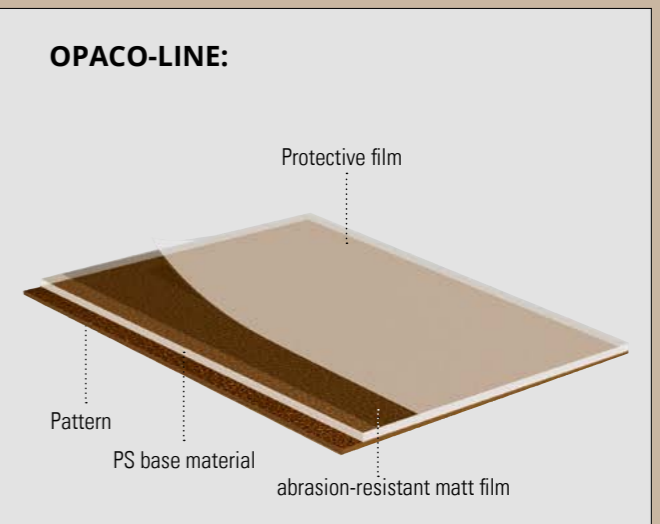
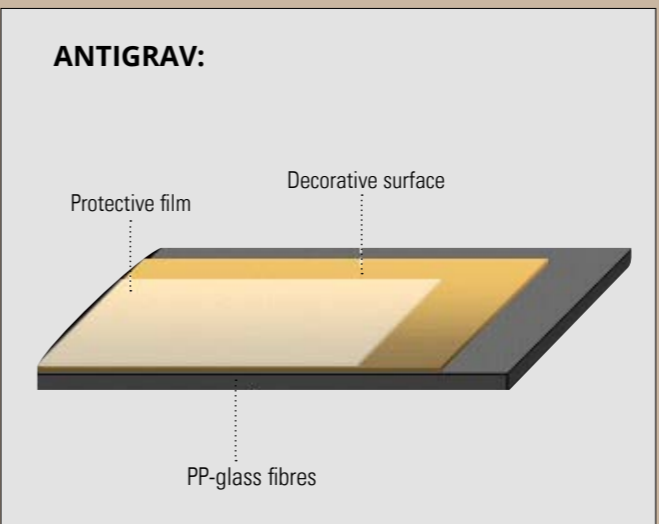
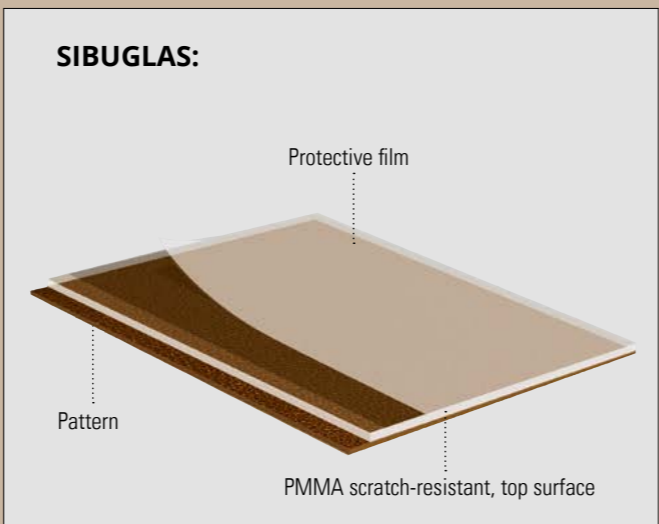
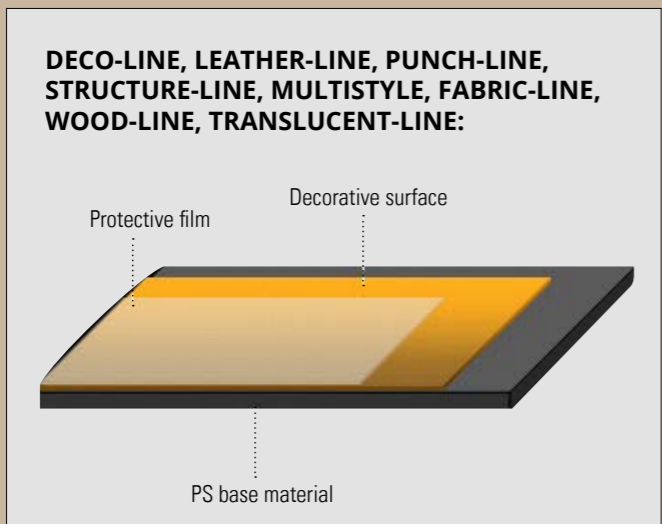
SIBU I ANTIGRAV

SIBU I BATH ART

SIBU I BOARD COLLECTION



# PRODUCTSTRUCTURE







# DIMENSIONS

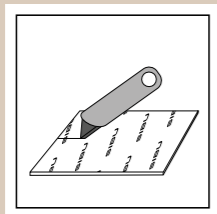
**Standard stock programme:** Dimensions: 2,600 x 1,000mm



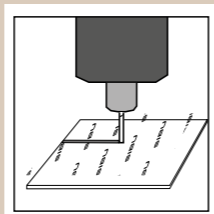
Format production  
Cut-to-size products, e.g. mirror curtains



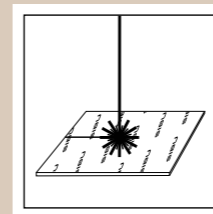
# PROCESSING POSSIBILITIES



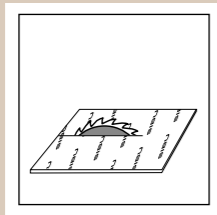
Cutting



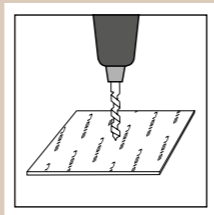
Milling



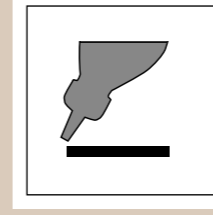
Laser cutting



Sawing



Drilling



Press bonding

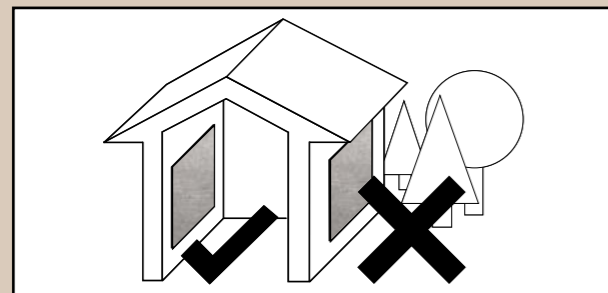
PVA pretreatment

More detailed information you will find in our OVERVIEW and on [www.sibu.at/en/processing](http://www.sibu.at/en/processing)  
Download under: <http://www.sibu.at/en/processing.html>

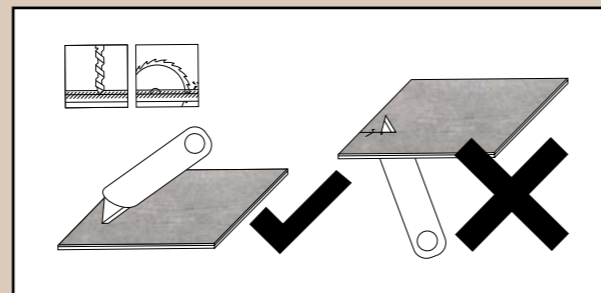




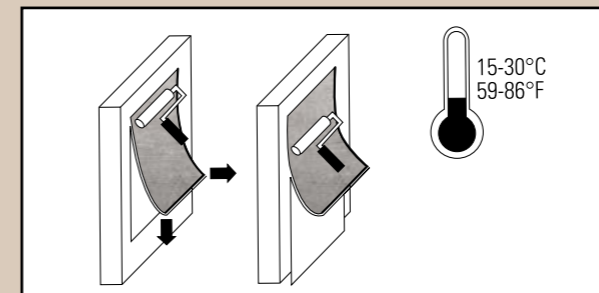
# PROCESSING INFORMATION



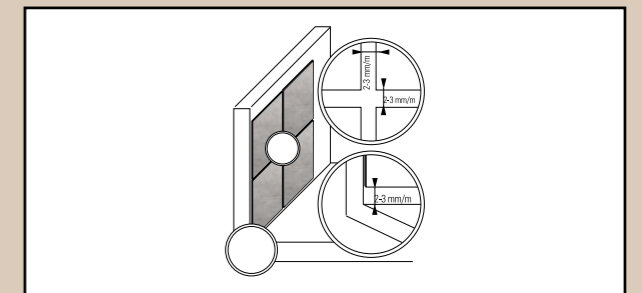
Only for interior application



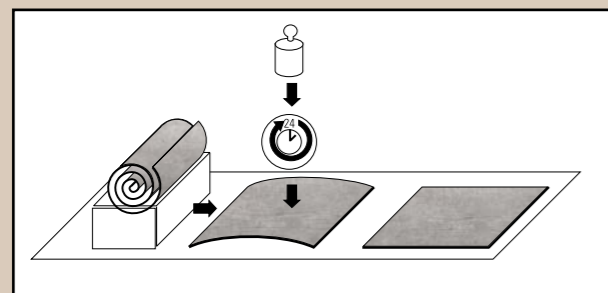
Processing of the design panel always from the top side



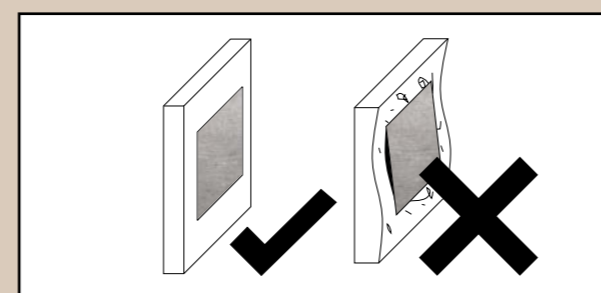
The design sheets should be acclimatized



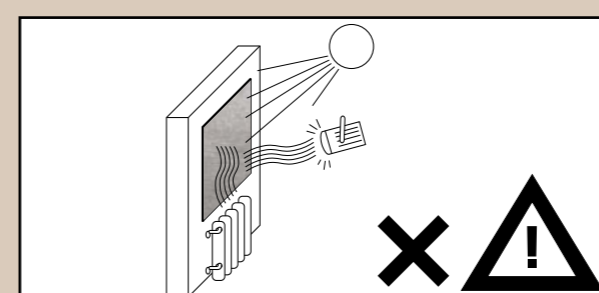
As a rule, an approx. 2-3 mm expansion joint is to be left along the sheet edges!



Patterned sheets delivered in rolled form should be kept flat for a minimum of 24 hours. Weighting down improves evenness.



The ground should be dry and flat, free from loose parts, dust, dirt, grease, wax and silicone.



Not recommended for use near open fires or strong heat sources.

You will find detailed information of our processing instructions under: [www.sibu.at](http://www.sibu.at)



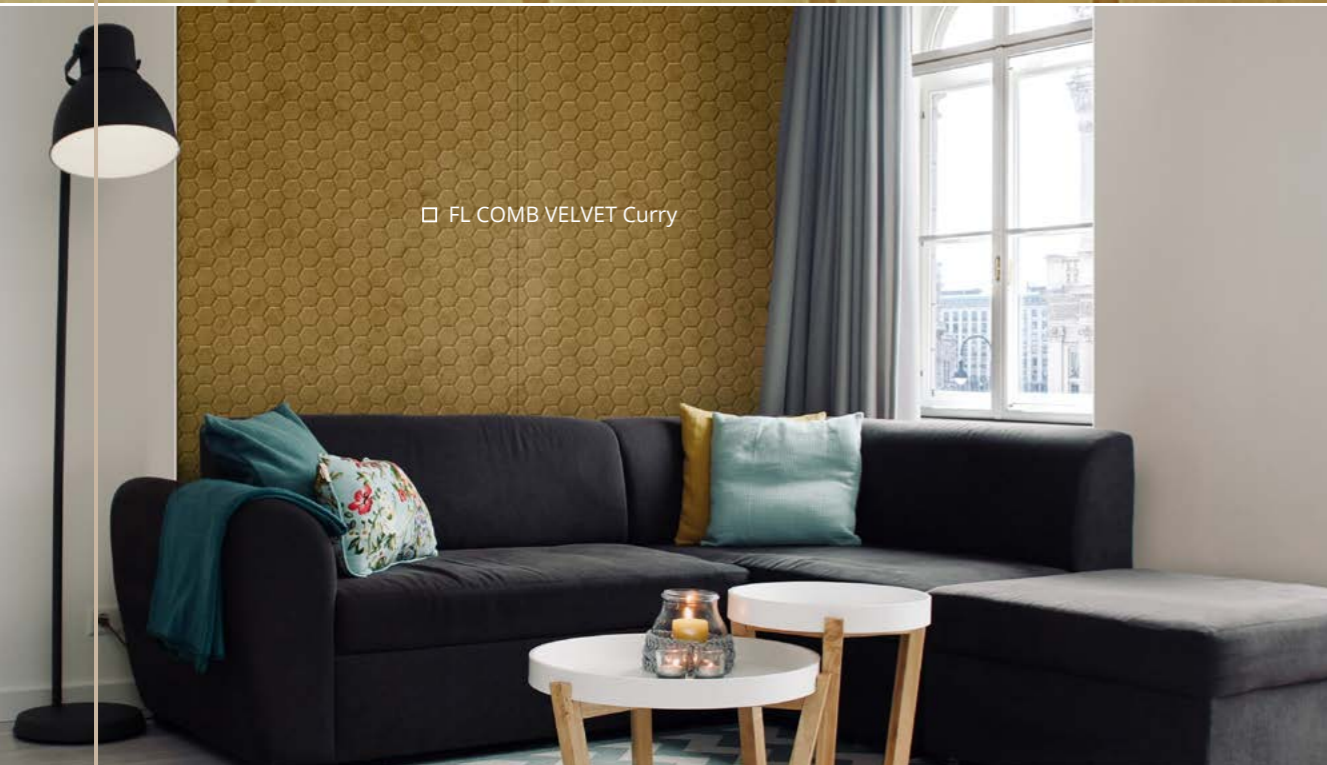


# FABRIC-LINE

The FABRIC-LINE - sophisticated and modern - offers a versatile range of different textiles. The interaction of the haptic quality, the structures and colours create a unique experience for all the senses.

The FABRIC-LINE as ANTIGRAV can be processed without expansion joints and has a beneficial effect on room acoustics.

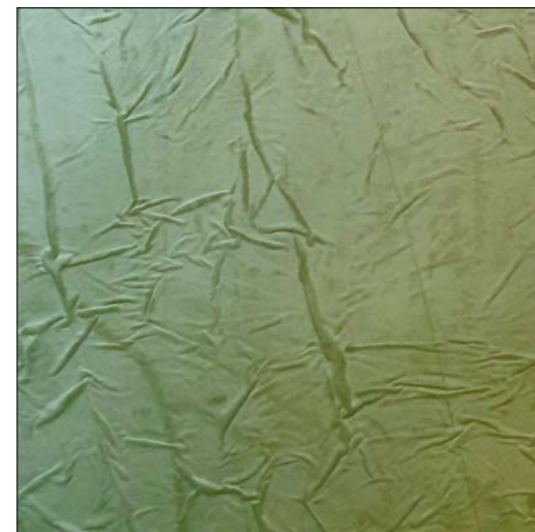
- › Continuous pattern
- › Trendy color and design combinations
- › High quality haptics
- › Available with magnetic backing
- › Available in ANTIGRAV
- › Further colour and structure options



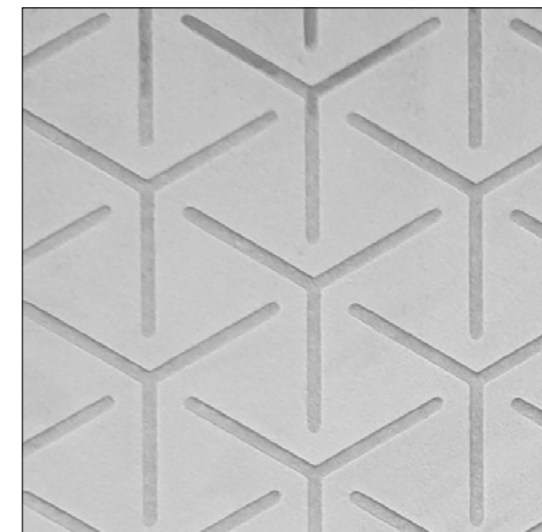
□ FL COMB VELVET Curry



□ FL CREPA VELVET Avocado



FL CREPA VELVET Avocado



FL CUBE VELVET Pearl







# OPACO-LINE

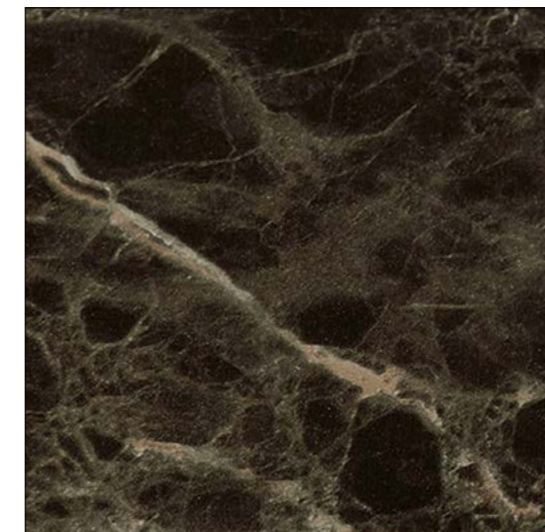
Semi-gloss design surfaces combined with an excellent abrasion resistance makes OPCACO-LINE essential for interiors with high design demands.

- › Extremely abrasion resistant
- › Noble matt surface
- › Indispensable for:  
Furniture, sliding doors, wall cladding and shop fitting
- › Modish colours
- › Available with magnetic backing
- › Matching profiles are available for all OPACP-LINE products

OL MARBLE Black matt AR



OL MARBLE Alpine matt AR



OL MARBLE Emperador matt AR









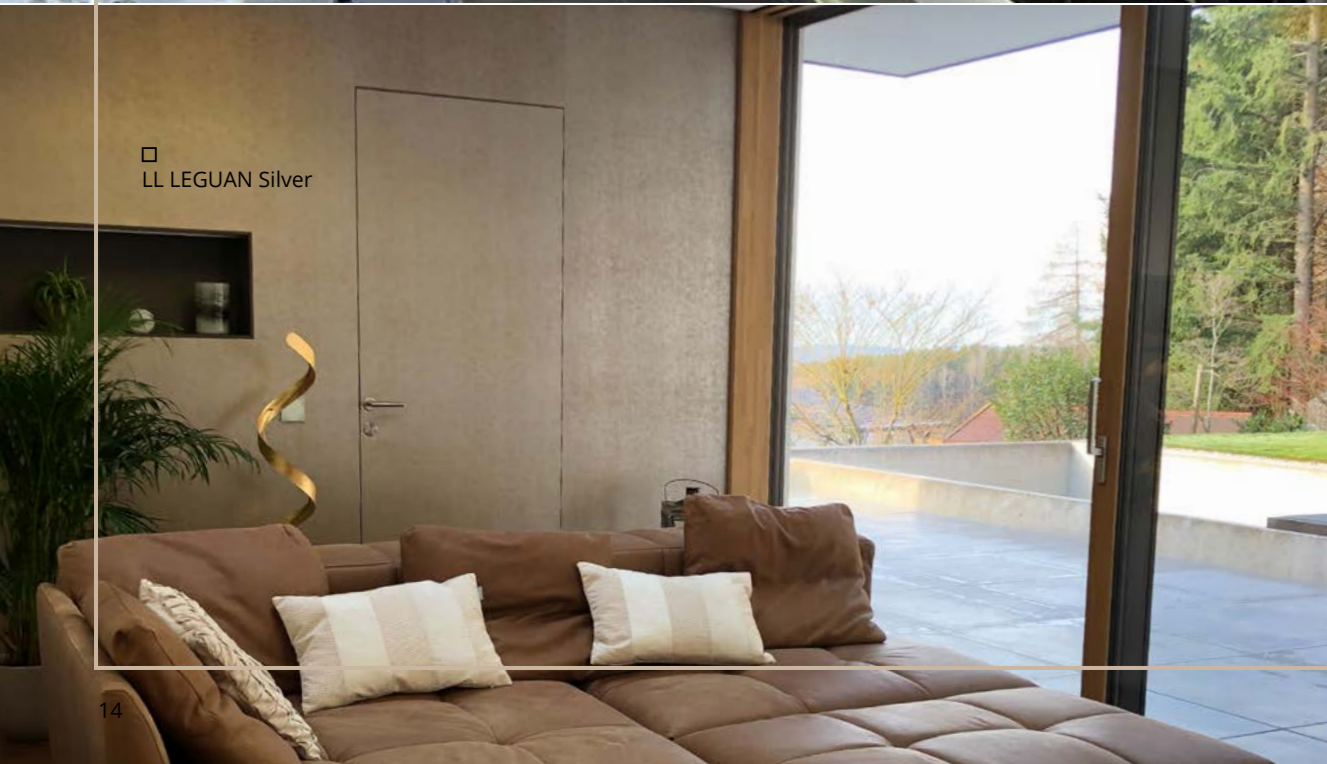
# LEATHER-LINE

Our unique synthetic leather surfaces outshine other products.

LEATHER-LINE offers a diversity of designs and top surfaces in highly fashionable colours and all in PVC-free quality.

The range includes versions in stylishly smooth leather, fur, reptilian and decorative grain looks, as well as leather surfaces in shimmering metallic colours.

- › Synthetic leather top surfaces
- › Modish designs and colours
- › High quality haptics
- › Smooth and structured decor
- › 100% PVC-free
- › Suitable for bonding with PVA
- › Also available in magnetic versions



LL LEGUAN Silver



LL FLORAL VINTAGE Silver/Silver





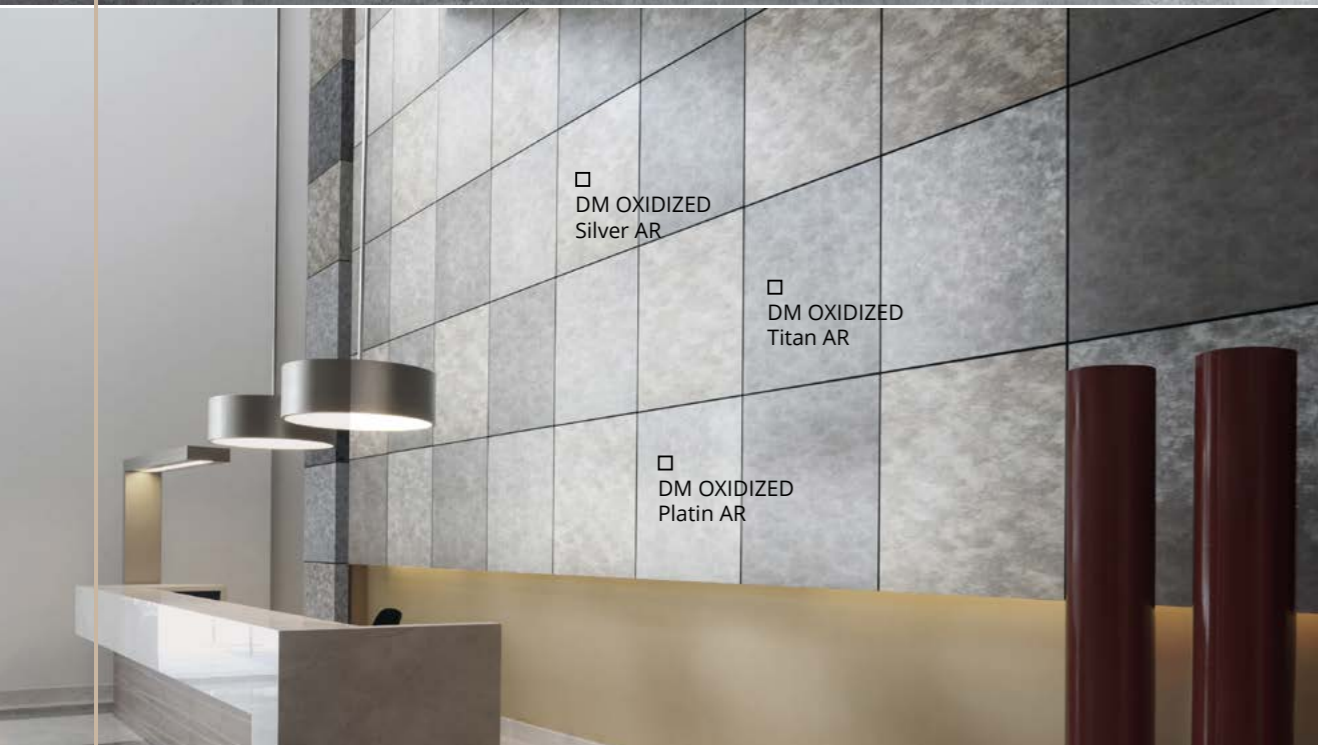


# DECO-LINE

The DECO-LINE delivery programme includes brilliant mirror and metallic top surfaces, as well as modish metal and wood structures. Irrespective of whether they are used for display, printing, furniture, trade fair or shop fitting purposes, DECO-LINE products represent a non plus ultra.

In addition, DECO-LINE products are also available with abrasion-resistant surfaces.

- › Mirror, metal and wood looks
- › Fashionable designs and colours
- › Problem-free printing
- › Many products supplied in a flame-retardant variation
- › Also available in magnetic versions



DM Gold brushed matt AR



DM LUXURY Bronze







# MULTISTYLE

The MultiStyle delivery programme contains mirror and metallic top surfaces with a stylish mosaic appearance. MultiStyle products are characterised by their extreme flexibility. They can therefore be used in a highly individual manner and even curved surfaces are no problem.

MultiStyle is a must in the display and decoration area!

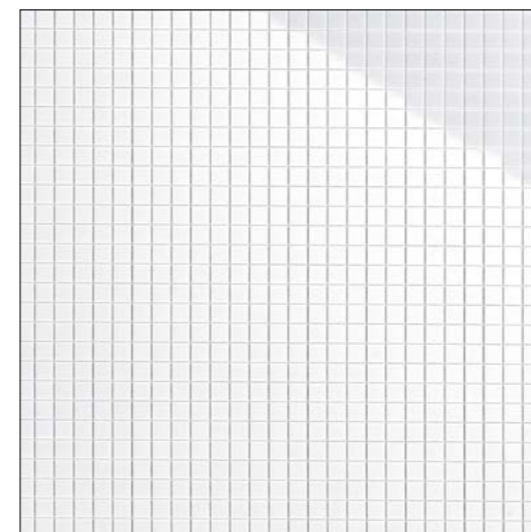
- › Flexible mosaic mirrors
- › Hip scratches
- › Problem-free digital printing
- › An absolute eye-catcher
- › Ideal for rounded surfaces
- › Available in magnetic versions
- › Standard format: 980x980mm, can also be supplied in a 2,600 x 1,000mm format!



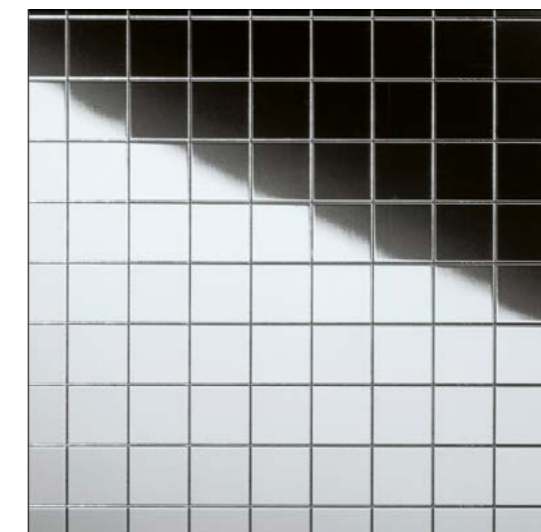
MS 10x10 flex Classic Gold



MS 20x20 flex Classic Silver



MS 5x5 flex Classic MAGIC White



MS 10x10 flex Classic Silver





Photo: Malo Clinic at El Corte Ingles - Lisboa

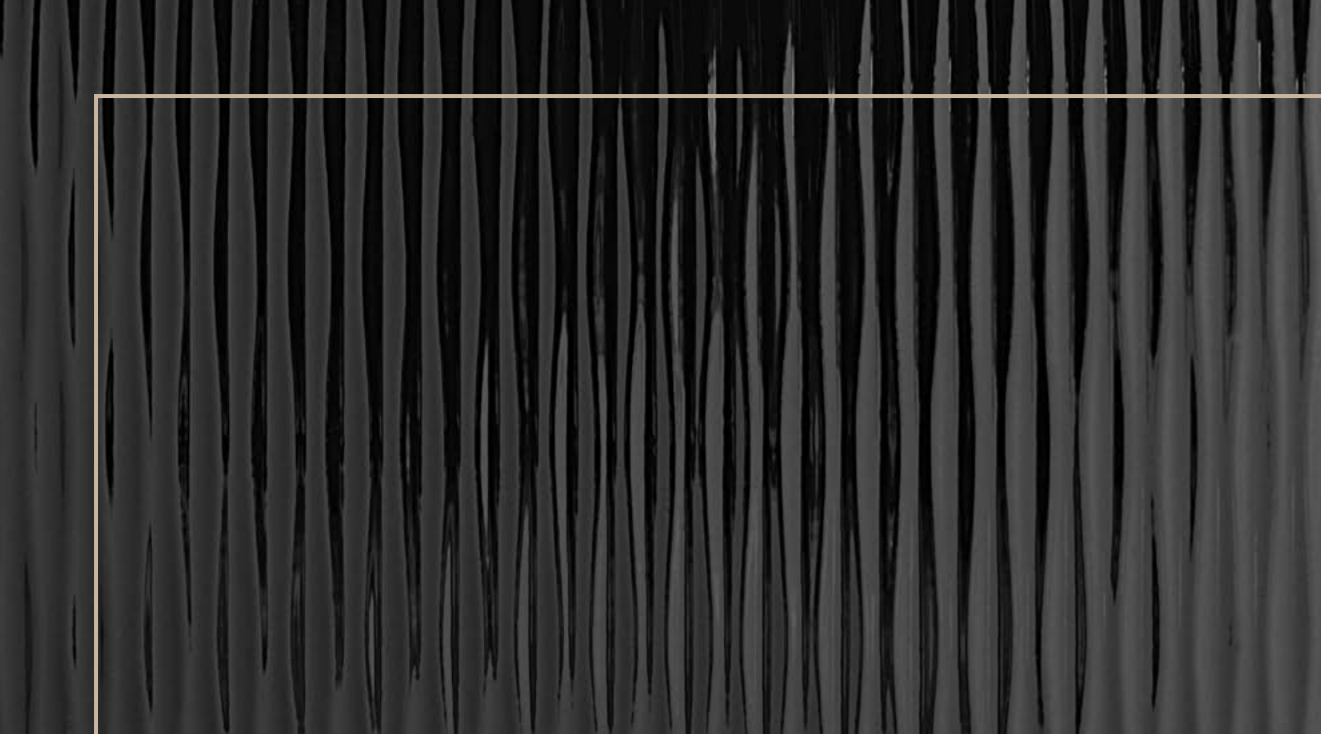


# ACRYLIC-LINE

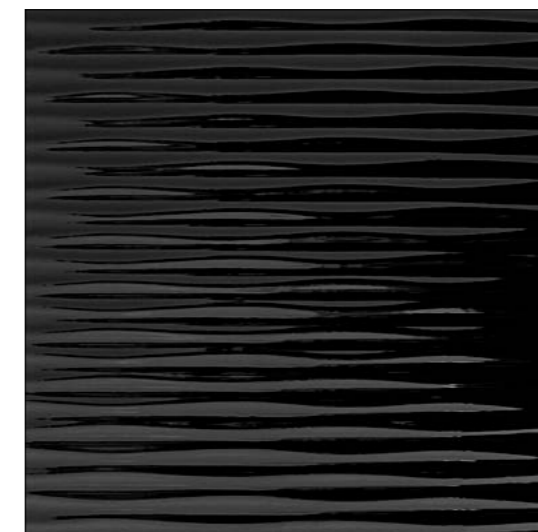
The SIBU ACRYLIC-LINE incorporates structured, high gloss surfaces in top quality ABS/PMMA material and turns furniture into a genuine eye-catcher. In addition, the homogenous acrylic material not only stands out due to its shining appearance, but also its excellent processing characteristics and abrasion resistance.

Moreover, should the robust top surface be damaged at any time, it can be easily re-burnished.

- › High-gloss appearance
- › Structured ABS/PMMA
- › Extremely abrasion-resistant
- › Suitable for bonding with PVA
- › Ideal for furniture fronts



AC MOTION ONE White



AC MOTION TWO Black





Photo: GARANTküche





# STRUCTURE-LINE

SIBU STRUCTURE-LINE is perfect for those looking for a structured scene-stealer.

Three-dimensionality combined with fashionable colour combinations lends the STRUCTURE-LINE range an unmistakable appearance.

And irrespective of whether a concrete, vintage, reptilian, metallic or wood surface look is wanted, the perfect product is available for every taste.

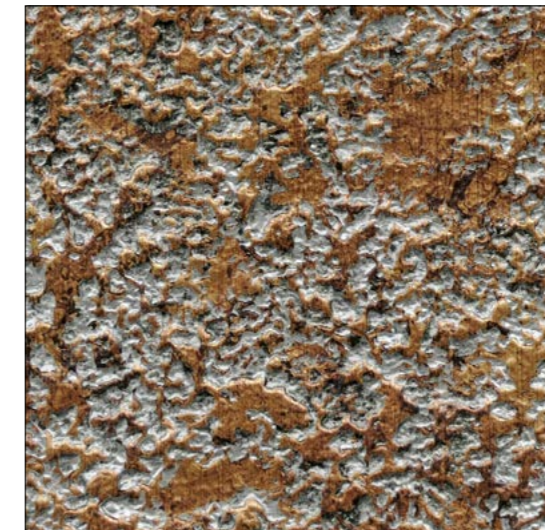
- › Designs with a structure
- › Vintage look
- › Reptilian look
- › Metallic look
- › Can be supplied in magnetic versions



□ SL CRASHED Silver



SL CRASHED OLD Platin



SL LAVA VINTAGE Copper





Photo: Dekomat AG - Creative Expert



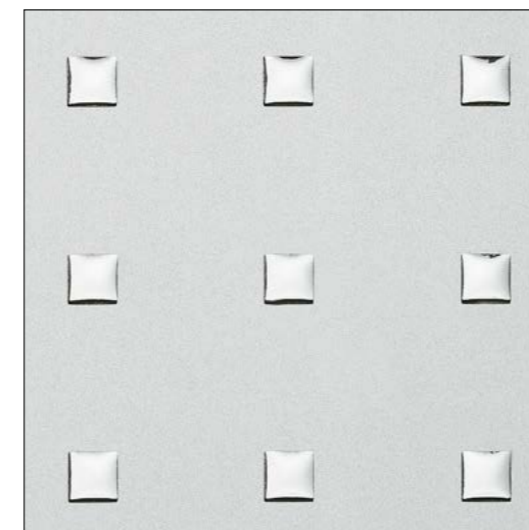
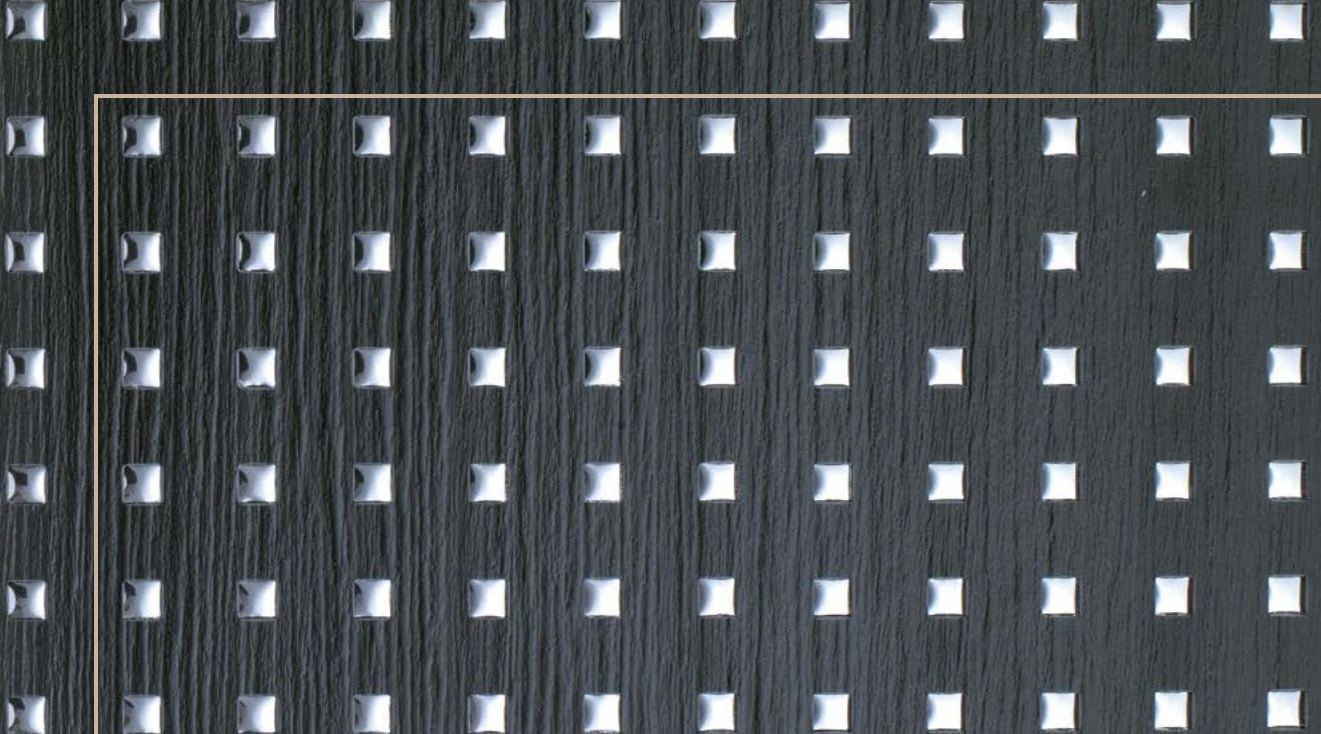
# PUNCH-LINE

## PUNCH-LINE/3D

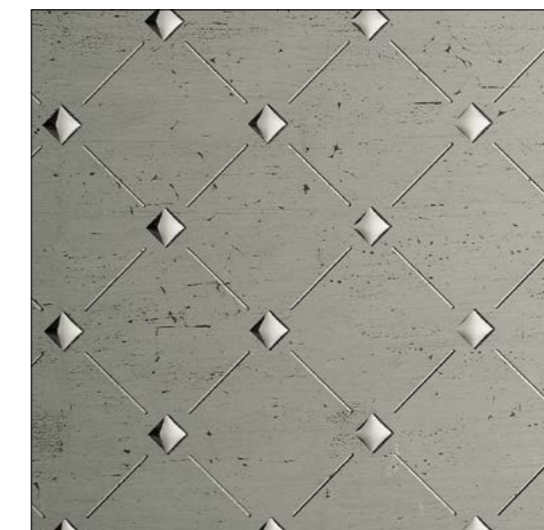
The SIBU PUNCH-LINE/3D range includes perforated, metallic surfaces in abrasion-resistant quality.

Stylish, 3D effect films lend the PUNCH-LINE 3D perforated patterns their name and the series again offers top looks and fashionable colours.

- › Perforated pattern sheets
- › Available with 3D effects
- › Metallic appearance
- › Abrasion-resistant variations
- › Available in magnetic versions



PL3D Q 10-40-40 Silver PF/Silver



PL3D Q-10-30 OLD Platin/Silver





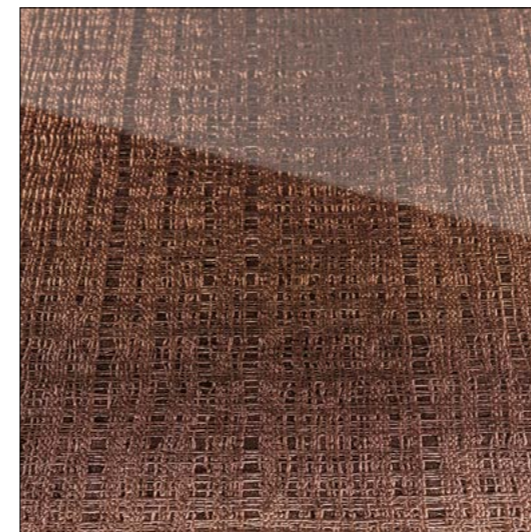
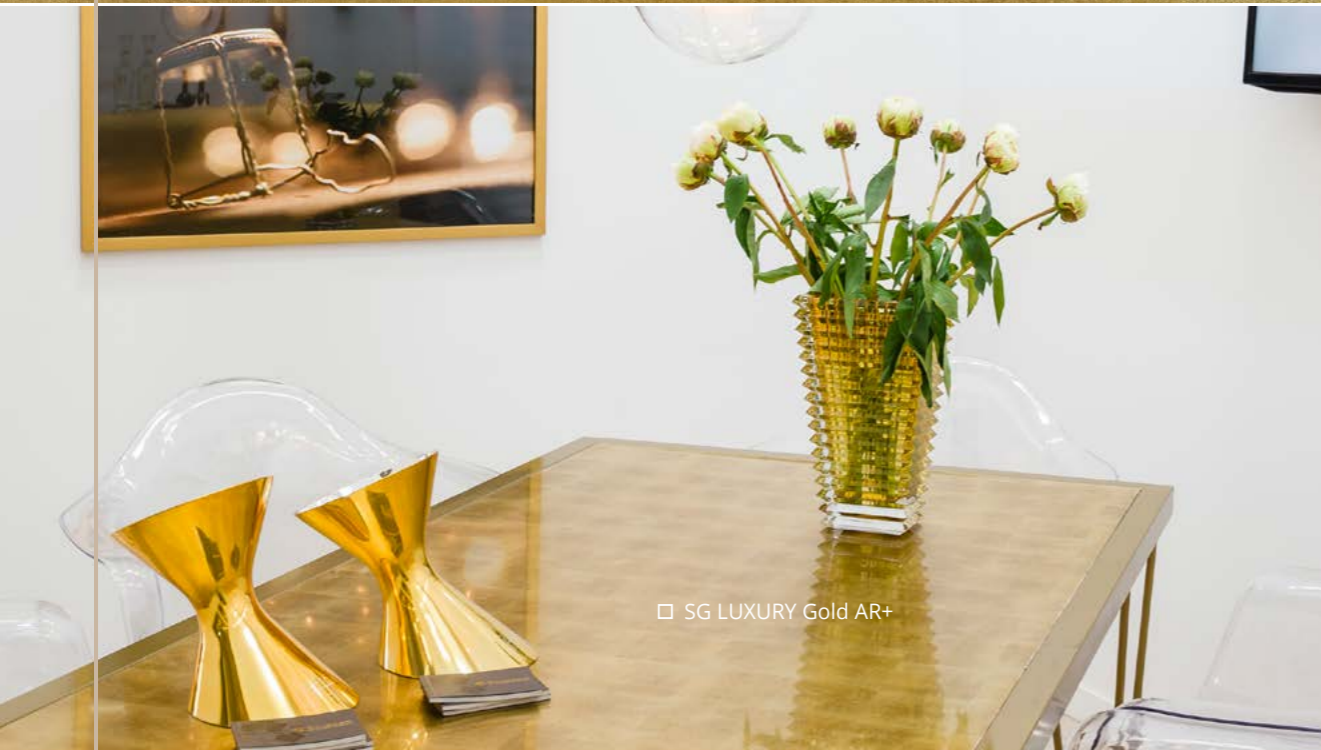


# SIBUGLAS

Acrylic glass backed by leather and co. creates a revolutionary depth effect that transforms items of furniture into unique design objects.

SIBUGLAS products are extremely abrasion-resistant (AR+).

- › Acrylic glass
- › High-gloss surfaces
- › Extreme depth effect
- › Abrasion-resistant
- › Available in magnetic versions



SG GRID Rose AR+



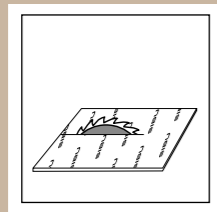
SG MARBLE Black AR+



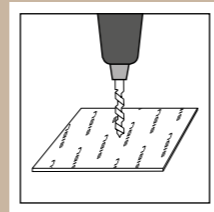




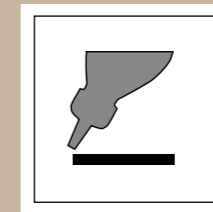
# SIBUGLAS PROCESSING



Sawing

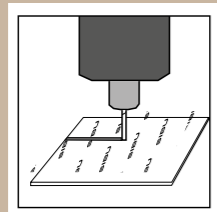


Drilling

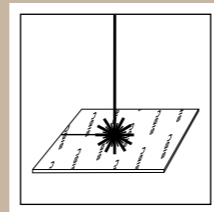


Press bonding

PVA pretreatment



Milling



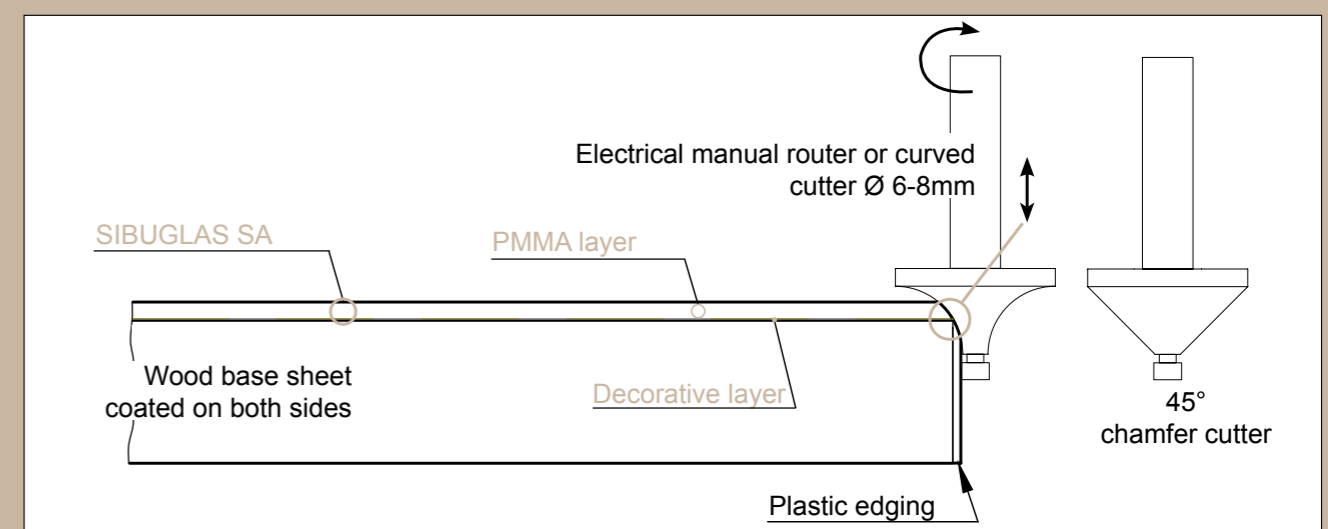
Laser cutting

- › Working with self-adhesive SIBUGLAS
- › press bonding SIBUGLAS



# SIBUGLAS self-adhesive on wood base sheets

- › Remove the adhesive cover and bond the sheet onto the wood base sheet (rubber roller). No counter-pressure required.
- › Cut to the required dimensions and apply the edging.
- › Using an electrical manual router, mill a rounded edge exactly up to the point of transition from the transparent PMMA layer to the structured layer.





# TRANSLUCENT-LINE

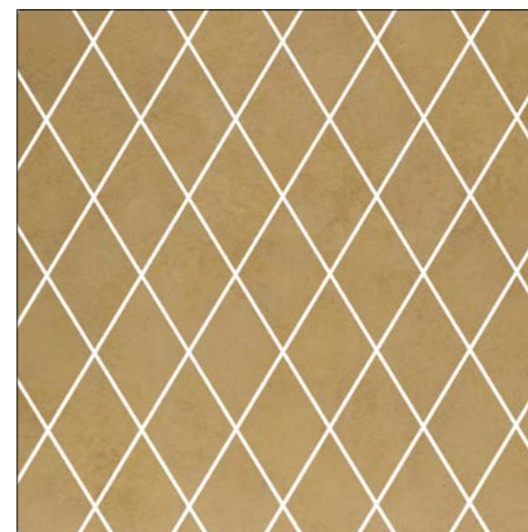
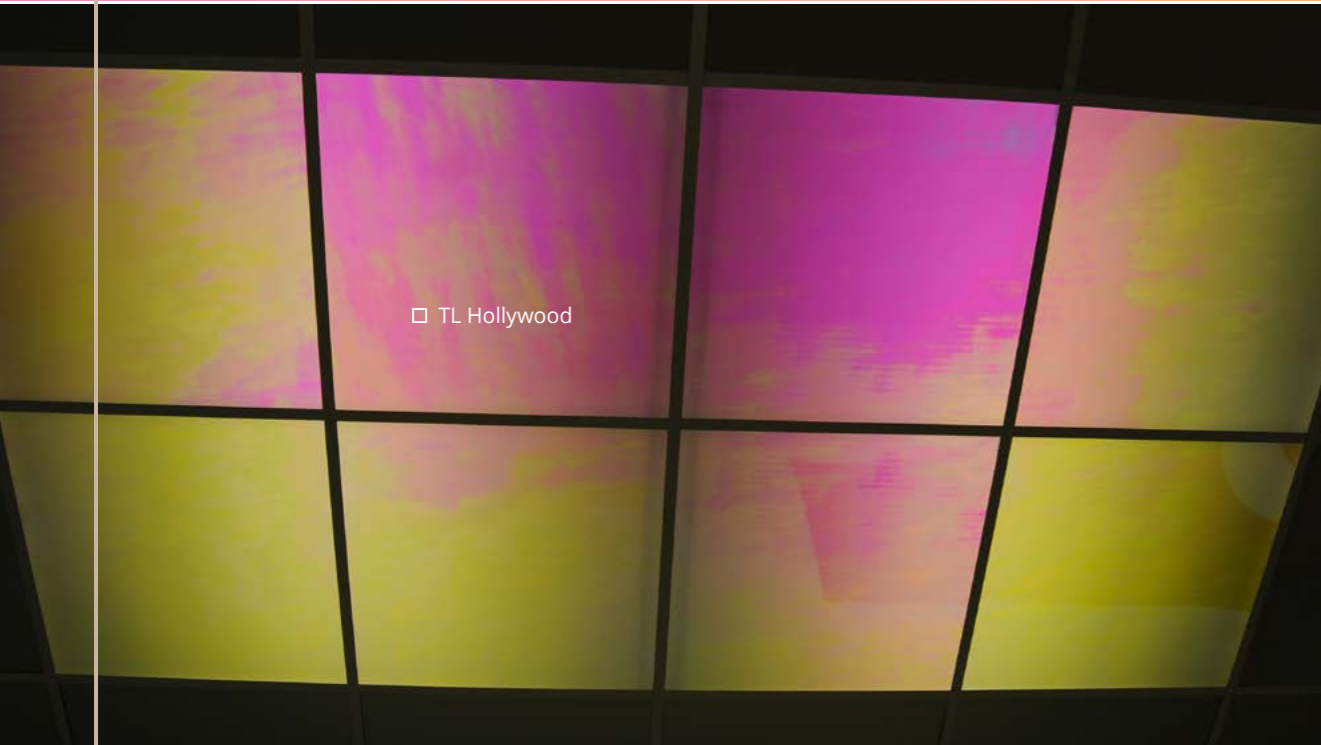
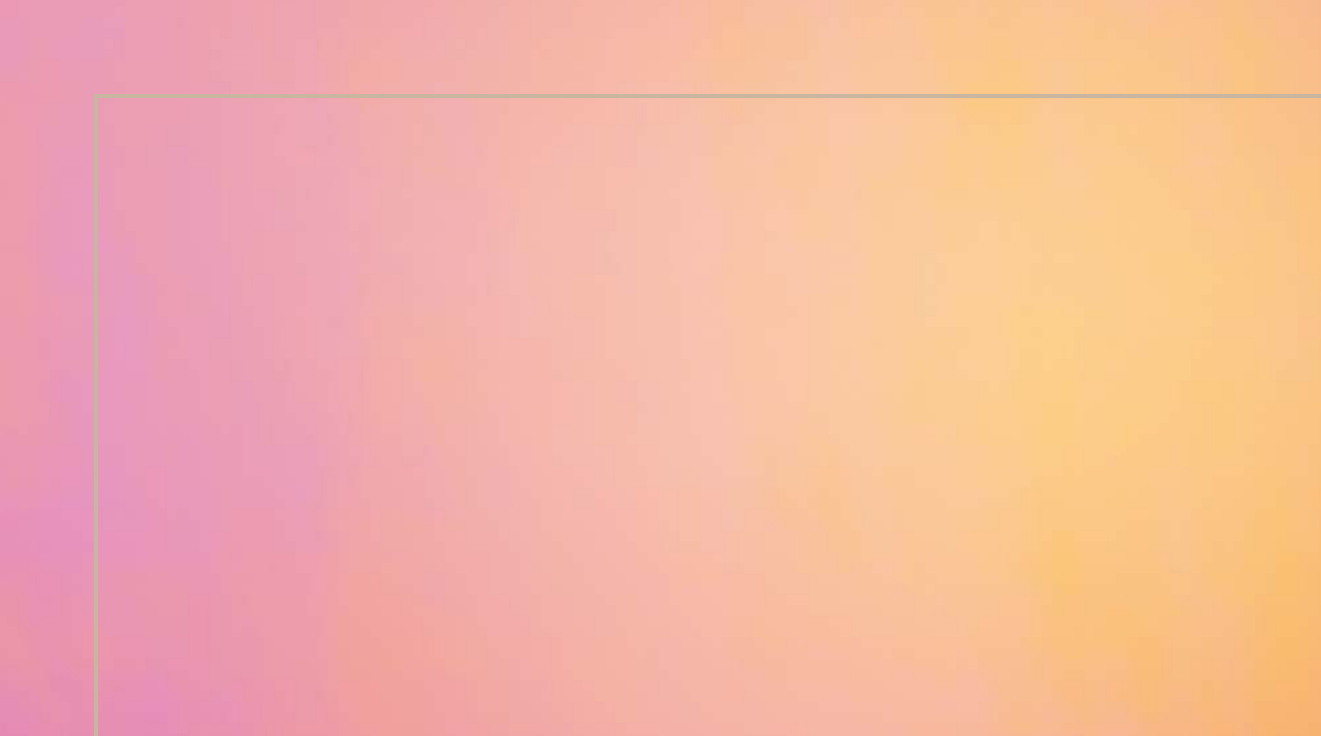
TRANSLUCENT-LINE brightens up any surroundings!  
The recesses in the sheet allow light through and therefore are ideal for backlighting.

Whether for ceilings, bar or wall panelling, the TRANSLUCENT-LINE lends every room touches of brilliance.

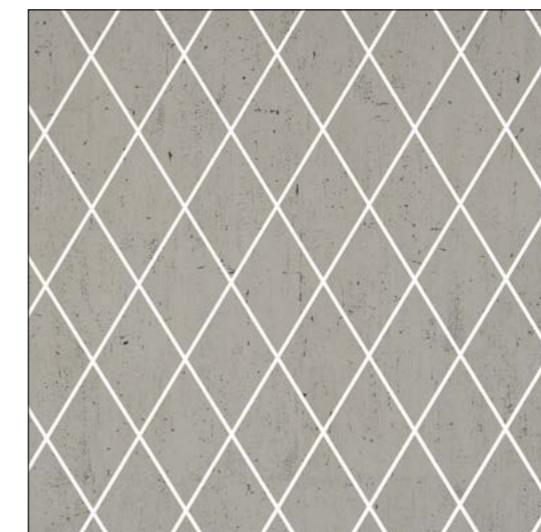
Lighting: LED, fluorescent tubes

## INDIVIDUAL LIGHT MOTIFS POSSIBLE

Any logotype, form or design can be completed problem-free.  
Simply send us a technical drawing in dxf or dwg format.



TL LINEA 104x62 SILENT Gold



TL LINEA 104x62 OLD Platin








# WOOD-LINE

SIBU DESIGN goes nature - and its new WOOD-LINE product range offers fashionable shades with an animate grain structure. WOOD-LINE brings a breath of the forest into every home.

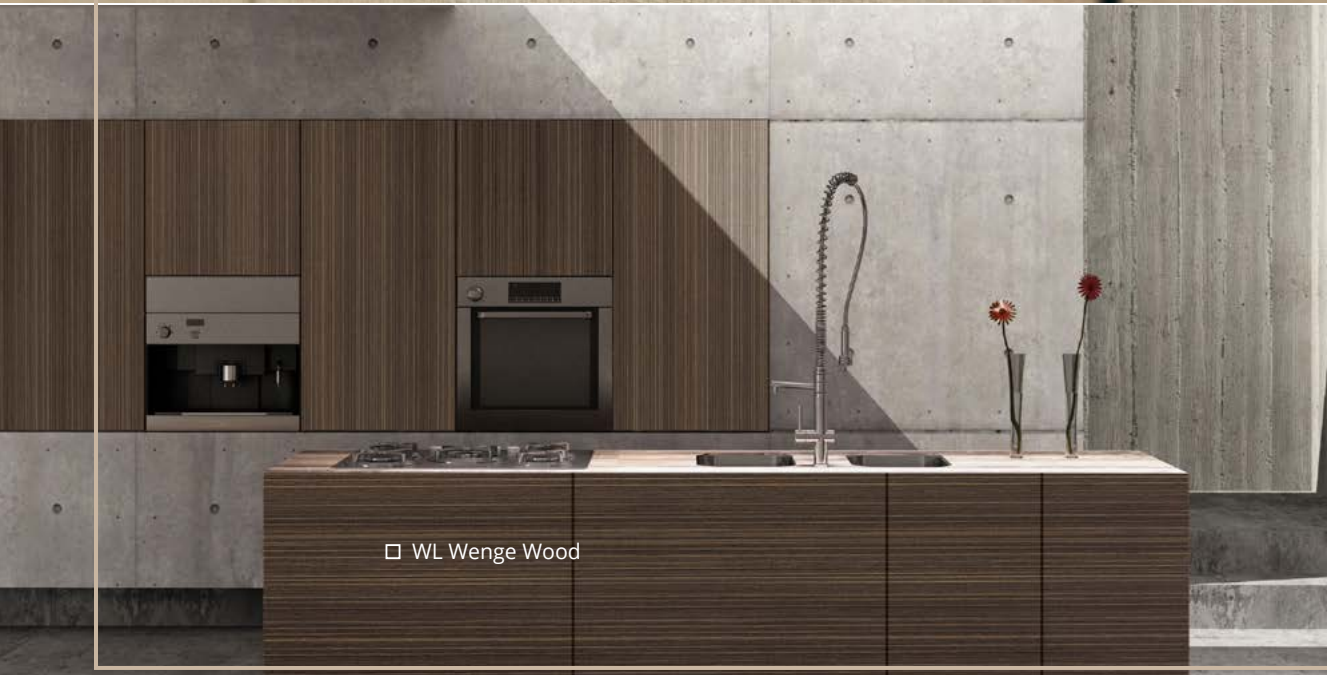
Whether used partly or extensively, the wood patterns from SIBU DESIGN lend the perfect finishing touch to your furniture.

So lend new life to your furnishings with WOOD-LINE's natural haptics.

Suitable edges are available for all WOOD-LINE products.



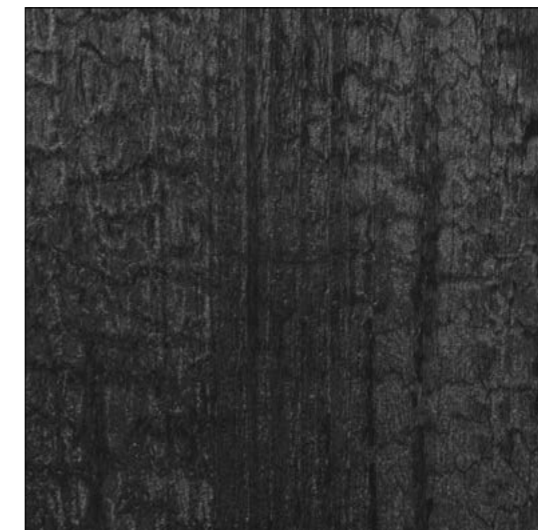
□ WL Maple Alpine



□ WL Wenge Wood



WL Nutwood



WL Carbonized Wood







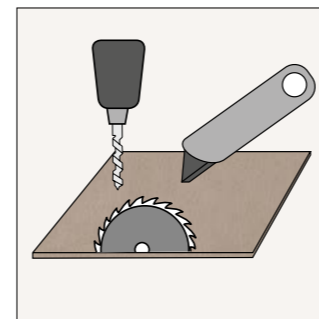


# SIBU | ANTIGRAV

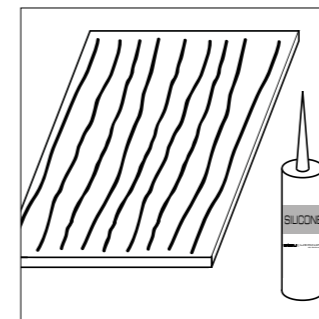
## JOINT-FREE PROCESSING

ANTIGRAV is an innovative and light material which, combined with SIBU design surfaces, can be used as wall panel without expansion joints.

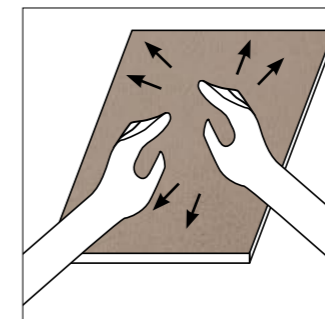
- › Extensive design options thanks to joint-free bonding (no expansion gaps necessary)
- › ANTIGRAV design panels are extremely light, dimensionally stable and compact, which guarantees easy handling
- › Adaption and further processing by means of standard cutting tools
- › Easy readjustment on all surfaces by gluing with silicone or MS polymer hybrid adhesives



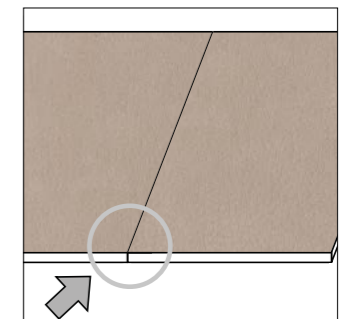
Processing to be executed from the patterned side.



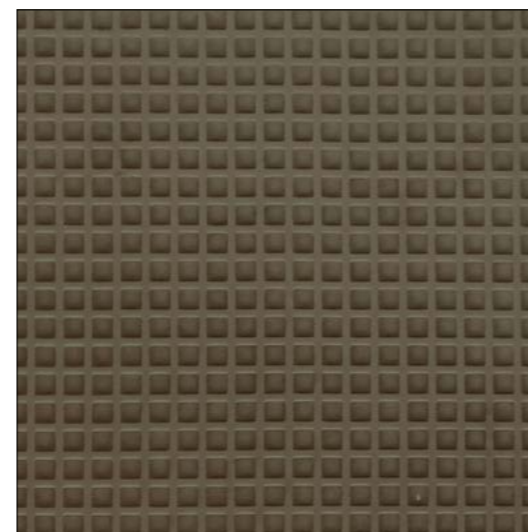
Apply beads of silicone vertically (1cm from the edge and with 6cm-spaces between the individual beads).



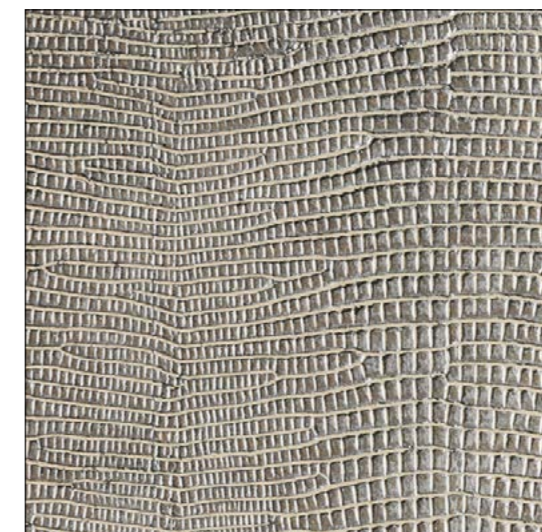
Press the sheet onto the wall and then adjust it.



Bonding is edge to edge = 0mm expansion joint



FL SQUARE 2 VELVET Mocha Antigrav



LL LEGUAN Silver Antigrav







# SIBU BATH ART

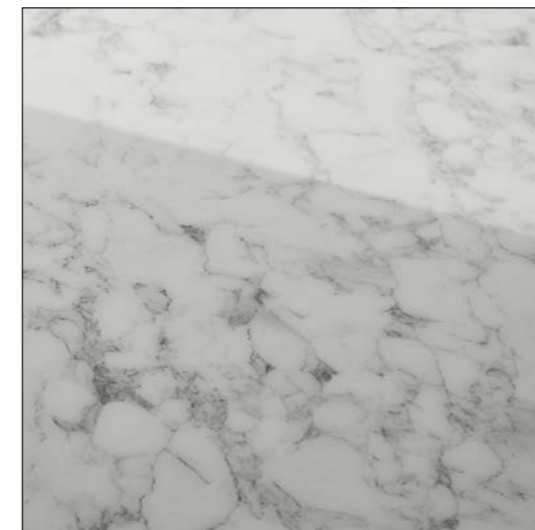
You can enjoy SIBU products, which combine the highest design and quality standards, in your shower cabin.

Irrespective of whether for a renovation or a new project, SIBU BATH ART products provide a time saving and innovative solution for your very personal bathroom design.

- › Scratch-resistant, high gloss, easy-care and hygienic surfaces
- › The sheets with generous dimensions of 2,800x1,250 mm require only a limited number of joins and can be mounted onto the existing surface
- › Further processing takes place on the spot using standard woodworking tools
- › The sheets have been tested and approved for large temperature changes and high humidity levels
- › Matching profiles are available for all SIBU | BATH ART products



BA GENESIS Grey AR+



BA MARBLE White AR+





□ BA GENESIS Grey AR+



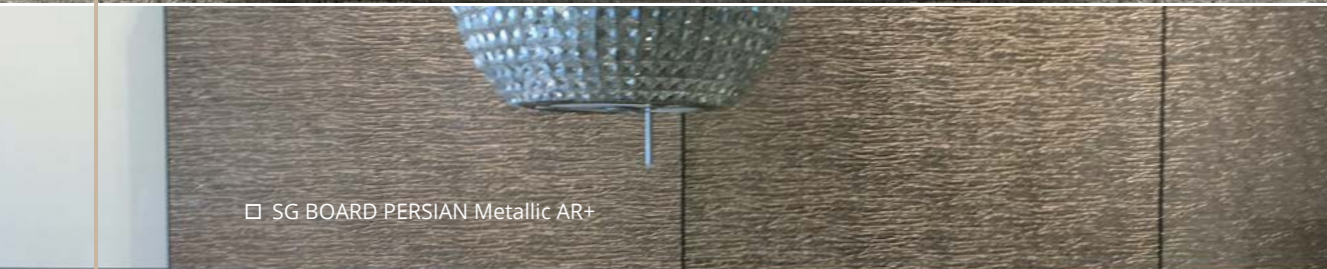


# SIBU | BOARD

## c o l l e c t i o n

Design meets function - in the SIBU | BOARD COLLECTION, which for the first time makes fashionable SIBU DESIGN patterns available on ready-pressed MDF boards. Accordingly, the SIBU | BOARD COLLECTION, which has been created in response to major demand, offers a simple but nonetheless innovative solution for the daily needs of the furniture industry.

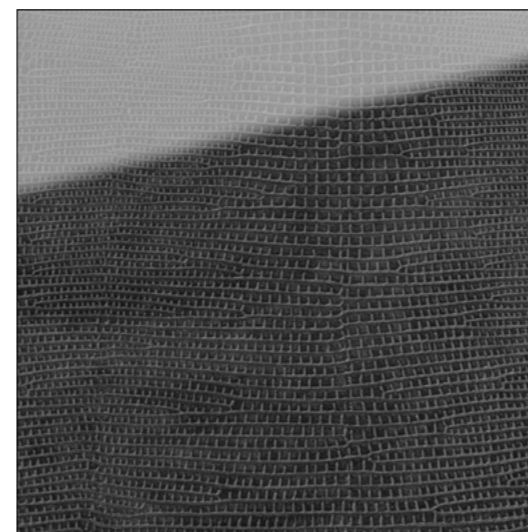
- › Vintage-, reptile- and stone patterned sheets with scratch-resistant surfaces
- › Pattern pressed onto MDF with suitable balancing material
- › 2800 x 1250mm delivery dimension
- › Straightforward, problem-free processing on edged furniture fronts
- › Suitable edges are available for all SIBU | BOARD COLLECTION products.



□ SG BOARD PERSIAN Metallic AR+



□ SG BOARD LUXURY Bronze AR+



SG BOARD LEGUAN NERO AR+



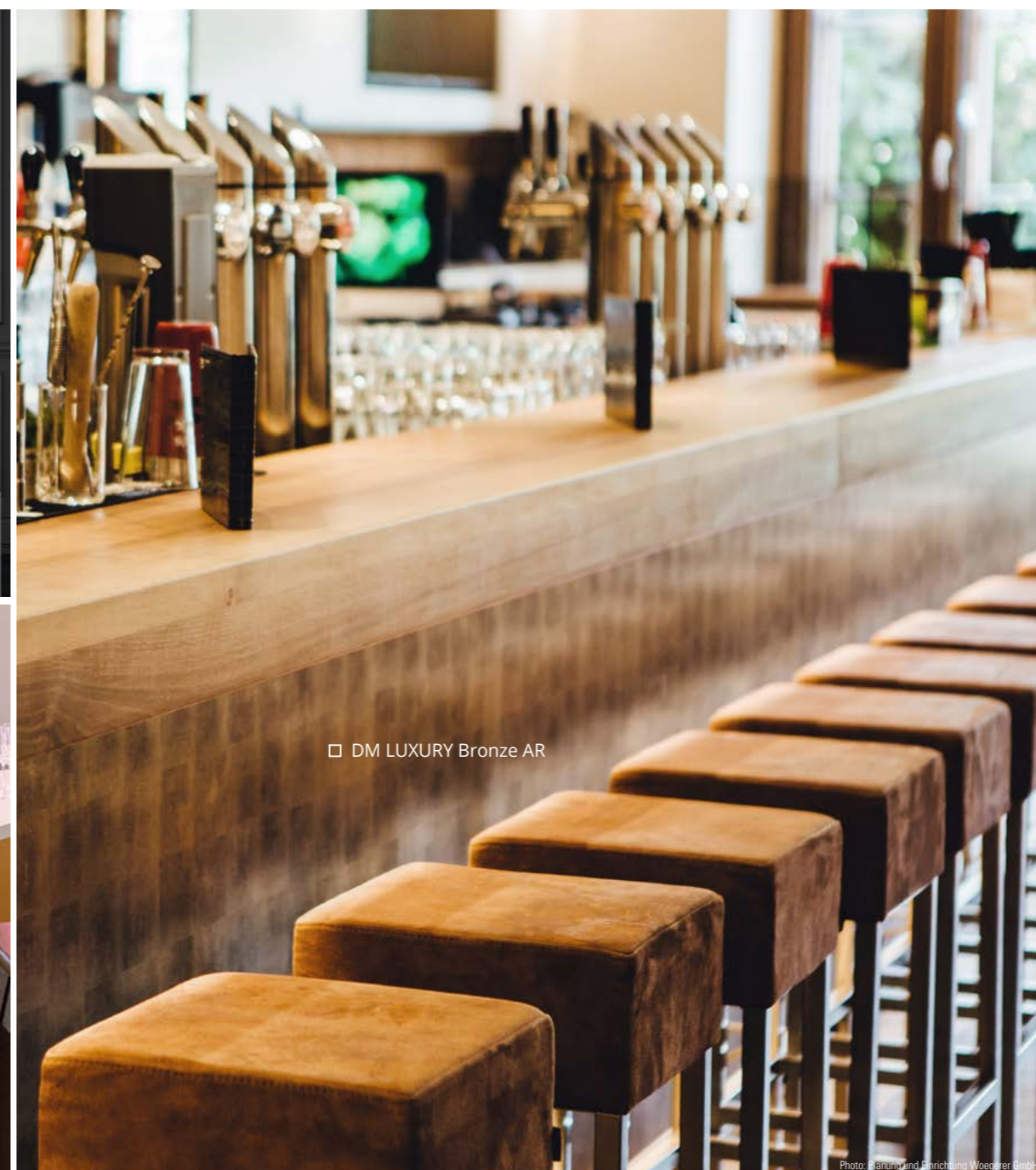
SG BOARD LUXURY Bronze AR+







# HOSPITALITY









# SLIDING DOORS







Photo: Boris Breuer - CABINET Schranksysteme AG



# EXHIBITIONDESIGN







Hall 6, Booth F38  
Hall 22, Booth C32



# FURNITURE | KITCHEN









# WALLDECORATION









# STORECONSTRUCTION



□ DM Silver brushed



□ LL CORD Dove Tale Antigrav







# SHOPWINDOW | DISPLAY







DISCOVER PARAJUMPERS.  
GET TO KNOW YOUR LONG BEAR  
THE ICONIC DETAILS



OVER 250 COMPONENTS IN TOTAL.  
A MASTERPIECE.  
INSPIRED BY INNOVATION. DESIGNED FOR FUNCTIONALITY.



PARAJUMPERS



# ADVERTISING MATERIAL

The range of SIBU DESIGN sales documentation at a glance.



## Overview Version 8

Complete catalogue (PDF Version only)

## SIBU World 2020

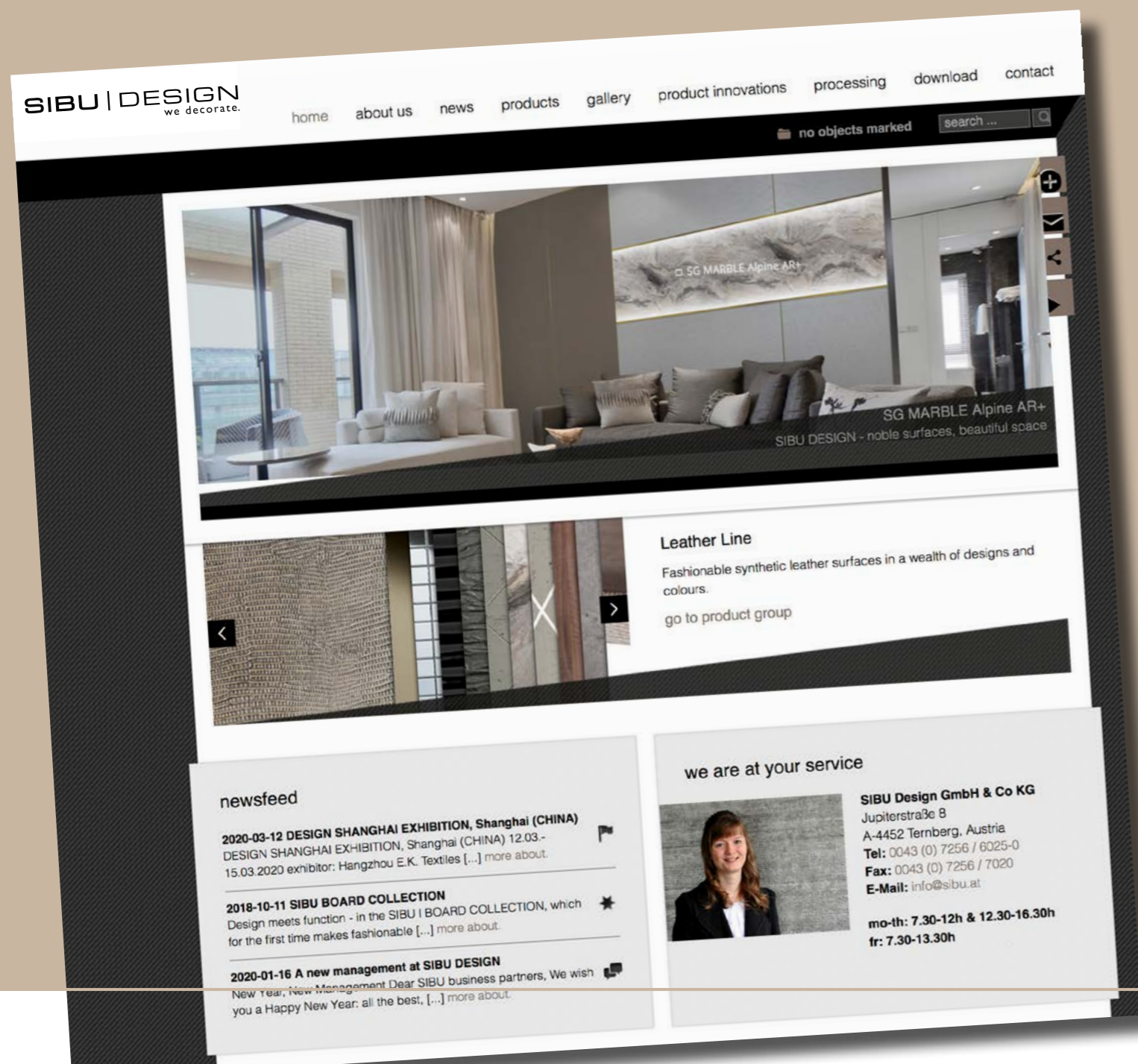
Overall presentation

## Produktkataloge (with original samples)

- » About SIBU DESIGN
- » SIBUGLAS
- » DECO-LINE DISPLAY
- » DECO-LINE DECORATION
- » LEATHER-LINE
- » WOOD-LINE
- » MULTISTYLE / PUNCH-LINE / PUNCH-LINE 3D
- » STRUCTURE-LINE / ACRYLIC-LINE / TRANSLUCENT-LINE
- » FABRIC-LINE
- » OPCA0-LINE
- » ANTIGRAV
- » BOARD COLLECTION
- » BATH ART
- » OPTICAL MIRROR



Immerse yourself in the world of



Detailed information regarding  
our products can be found in  
our **OVERVIEW** catalogues  
or on our website at  
**www.sibu.at.**



# SIBU | DESIGN

we decorate.

SIBU DESIGN GmbH & CoKG  
Jupiterstraße 8 - 4452 Ternberg - Austria - Tel.: +43 (0) 7256.6025.0  
Fax: +43 (0) 7256.7020 - [info@sibu.at](mailto:info@sibu.at) - [www.sibu.at](http://www.sibu.at)

