

DRYING ROOM YELLOWING

What is “drying room yellowing” (also known as “stove yellowing”)?

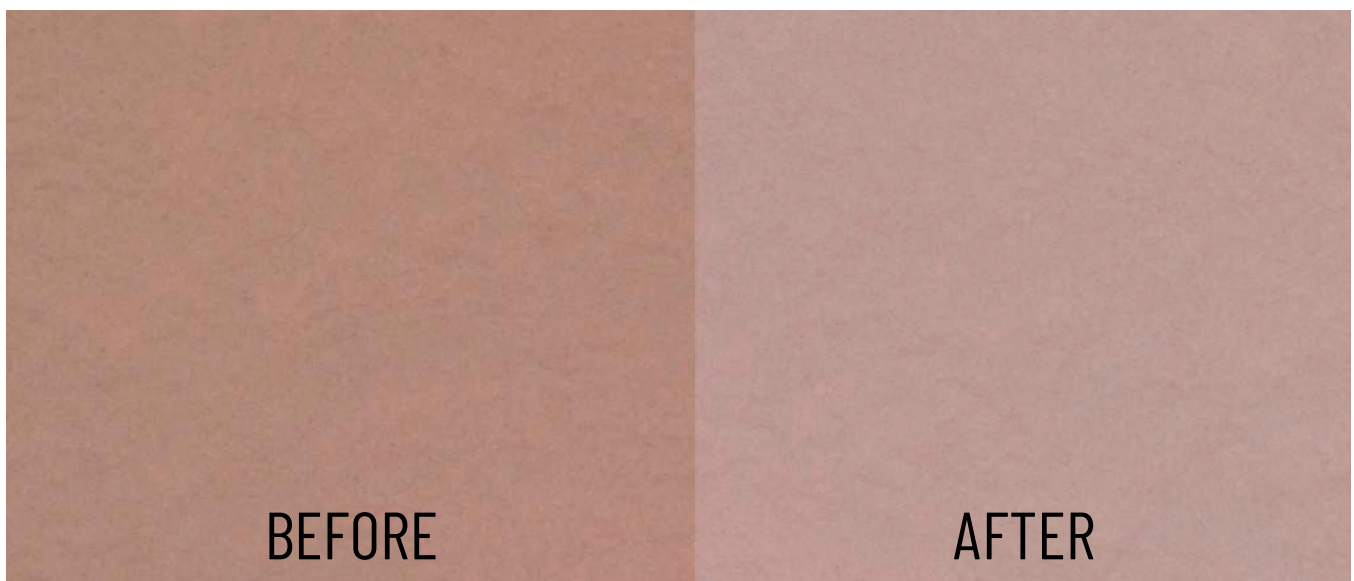
Linoleum is a material that is made mainly out of renewable raw materials. It gets the necessary hardness-elasticity ratio in the drying room or “stove”. Especially during the post-oxidation phase, a yellow tint can appear on the surface of the linoleum, the drying room yellowing.

What can be done against this?

The drying room yellowing is especially conspicuous on bright colours, but it will disappear completely under the influence of light. Now, the linoleum is getting back its original colour.

How long this process is taking depends on the intensity of the light. While the yellow tint will disappear after only a few hours once reached by daylight or sunlight, it can take several weeks with little light or artificial light. If there is no light, the drying room yellowing may reappear (e.g. if the linoleum is covered by a carpet, a rug, etc.).

The following image shows the difference before and after the influence of light on the linoleum:



To be able to objectively choose a colour, we recommend to put the linoleum samples and collections in the daylight or, better yet, in the sunlight for a couple of hours.